

Updating devices from firmware level 3.1.4.7 and earlier to 3.2.0.0 and beyond

Because the device flash layout has changed, a bridging firmware image must be loaded to move the device to version 3.2.0.0 and beyond. This process requires installation of “ILT DataLight III Suite v1.2.5” or higher, which contains the required updates to the “FW Update” application. The following is a summary of the procedure described below:

1. Install “ILT DataLight III Suite v1.2.5” or higher
2. Open the “FW Update” application and validate it is version 3.0.0 or higher
 - a. Update if necessary
3. Use the “FW Update” application to update the firmware to 3.1.5.0
 - a. Version 3.1.5.0 is the “Bridging” firmware
4. Use the “FW Update” application to save the device configuration
5. Use the “FW Update” application to update to the latest firmware version, i.e. 3.2.0.0 or higher

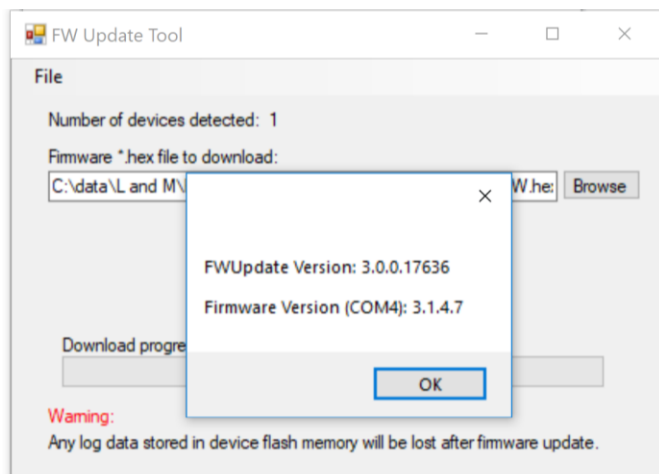
1. Install “ILT DataLight III Suite v1.2.5” or higher

This kit can be obtained via your tech support contact.

NOTE: The system may require removal of any earlier version of the product before this new version can be installed. This will not be required for future upgrades.

2. Open the “FW Update” application and validate it is version 3.0.0 or higher

Select File->About and confirm the proper version level, for example:

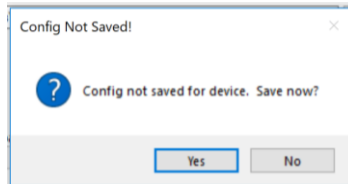


3. Use the “FW Update” application to update the firmware to 3.1.5.0

This is a special version of firmware used only for this bridging process.

Follow the standard procedure for firmware update:

- Copy the 3.1.5.0 firmware image on your system
- Select the “Browse” button to locate the firmware image
- Select Start Firmware Update
 - The following window may appear. Response ‘No’. This will be done in the next step, after update to 3.1.5.0. If you respond ‘Yes’ by accident, no harm is done and another message box will inform you that this feature is not supported.



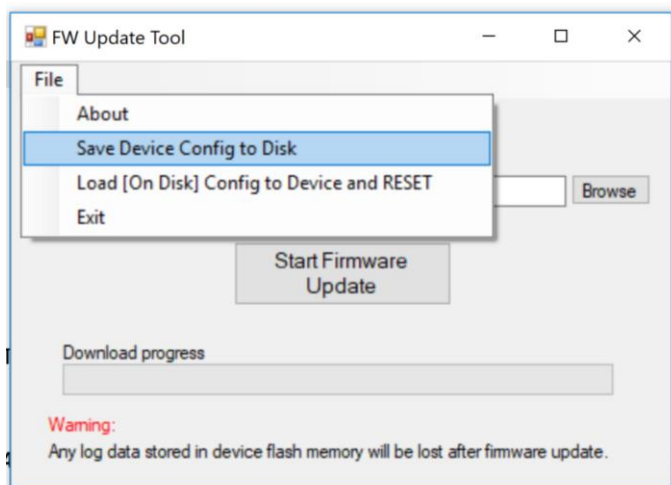
The process will signal completion.

4. Use the “FW Update” application to save the device configuration

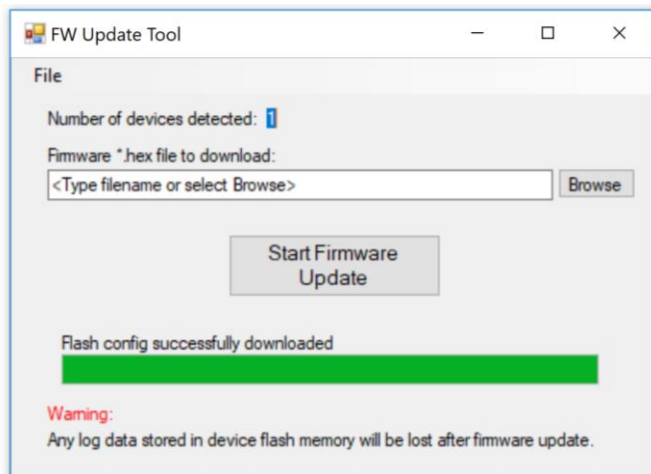
This is a new feature to save the device configuration, including calibration factors, ecal data, etc.

Select File -> Save Device Config to Disk

The data will be downloaded from the device and stored in the Documents\ILT\Inventory directory. The file name will match the base serial number of the device. This file can be used later if the device configuration needs to be restored. Note this is not required as part of this process as the device configuration will persist through these steps.



The system will indicate “Flash config successfully downloaded” when complete as shown below.



5. Use the “FW Update” application to update to the latest firmware version, i.e. 3.2.0.0 or higher

Follow the standard procedure for firmware update:

- Copy the 3.2.x.x firmware image on your system
- Select the “Browse” button to locate the firmware image
- Select Start Firmware Update

The process will signal completion.